

LVMTA MUSICIANSHIP EXAMS

THEORY EXAM GUIDELINE

LEVEL 4

NOTATION

Identify and Draw:

- Notes and rests



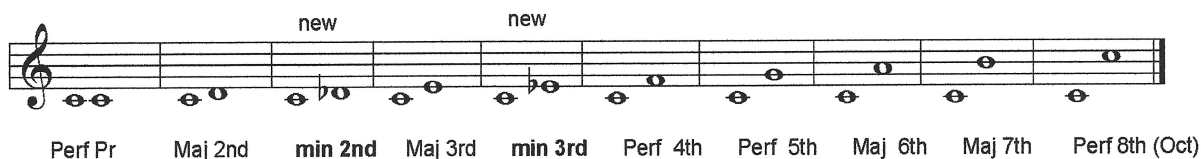
Whole rest represents entire measure in 2/4 3/4 4/4 time signatures.

INTERVALS

Identify in treble or bass clefs:

- Major 2nd 3rd 6th 7th
- Perfect Pr 4th 5th 8th (Oct)
- Minor 2nd 3rd

above the notes in keys of C F G D A E



Draw in treble or bass clefs:

- Major 2nd 3rd 6th 7th
- Perfect Pr 4th 5th 8th (Oct)

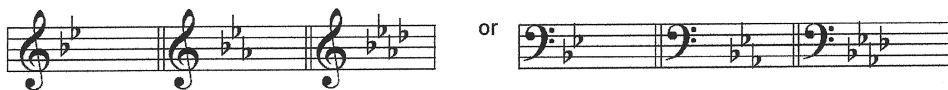
above the notes in the keys of C F G D A E



KEY SIGNATURES

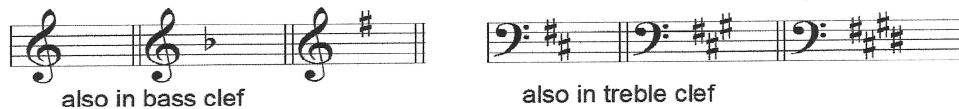
Identify in treble or bass clefs:

- Keys of B \flat E \flat A \flat major

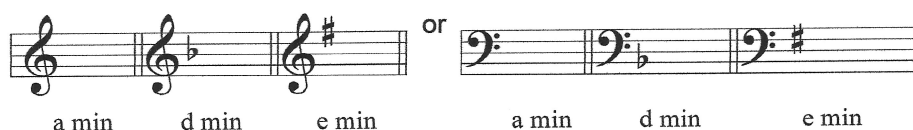


Draw in treble and bass clefs:

- Keys of C F G D A E major



- Keys of a d e minor



SCALES AND CHORDS

Identify in treble or bass clefs:

- Spell Bb Eb Ab Major triads with letters Ex: **Bb D F**
- I IV V7 in keys of C F G D A E with Roman numeral and letter



Draw in treble or bass clefs :

- Minor scales (3 forms- natural, harmonic, melodic) in a e d followed by the tonic (i) triads



RHYTHM

Identify:

- Use ♪ notes, rests, and 8th note triplets

- Measures with incorrect rhythm

Draw:

- Write in counting (beats) in measures with notes and rests



- Complete measures with the correct notes and/or rests

- "Music Math" - adding notes and rests EX: + + =

EAR TRAINING

Identify:

- Major, natural, harmonic, and melodic minor scales
- Major, minor, and diminished triads
- Same and different rhythms, including ♪ notes
- Intervals – 2nd 3rd 5th 7th 8th (oct)

Draw:

- Notation correction



VOCABULARY

Match definitions

Accelerando	Gradually increasing the tempo
Animato	Animated
Cantabile	Singing style
Coda	Ending
Dal Segno	Go back to the sign (%)
Harmonic	Note produced on a harp or stringed instrument as an overtone by lightly touching the string or a key on a flute while sounding it
Largo	Very slow
Marcato	Marked
Poco a poco	Little by little
Presto	Very fast
Sostenuto	Sustained

Music Symbols

	Harmonic
<i>fl</i> or <i>flatt</i>	Flutter tongue (winds and brass)
	Upbow (strings)
	Downbow (strings)
	Breath mark

HISTORY

Composer	Nationality	Period
Johann Sebastian Bach	German	Baroque
Ludwig van Beethoven	German	Classical
Muzio Clementi	Italian	Classical
Robert Schumann	German	Romantic
Dmitri Kabalevsky	Russian	Contemporary
John Phillip Sousa	American	Contemporary

FORM

March	A piece written in strongly accented 2/4 or 4/4 time.
Minuet	A graceful and stately dance in 3/4 time.
Sonatina	A short sonata form usually consisting of 3 movements.