



LVMTA Level 4 Ear training

Version 1 2023

Narrated by Lisa Fiorenza

Question A

What type of scale do you hear?

1. Major scale
2. Minor scale

Question B

What type of minor scale do you hear?

- a. Melodic minor scale
- b. Harmonic minor scale

Question C

What type of minor scale do you hear?

- a. Melodic minor scale
- b. Natural minor scale

Question D

What type of triad or chord do you hear?

- a. Major
- b. Minor

Question E

What type of triad or chord do you hear?

- a. minor
- b. diminished

Question F

The rhythm shown is the same rhythm being played.

- a. true
- b. false



Question G

The rhythm shown is the same rhythm being played.

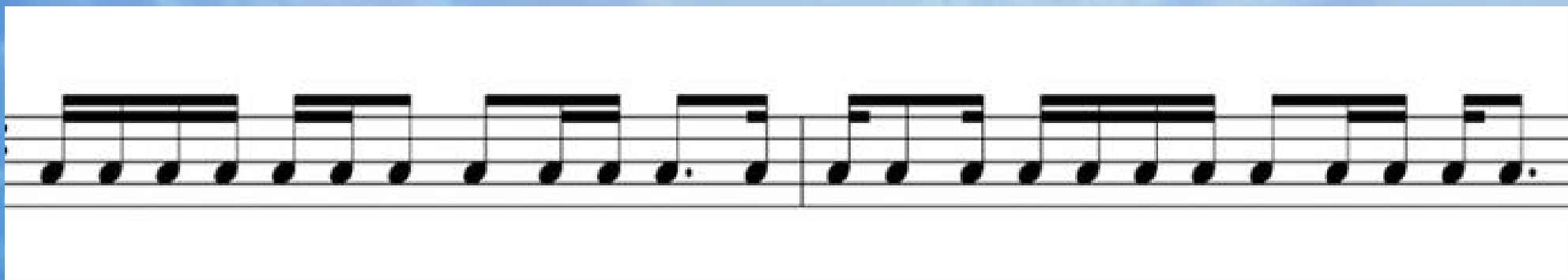
- a. true
- b. false



Question H

The rhythm shown is the same rhythm being played.

- a. true
- b. false



Question 1

Choose the interval you hear being played.

- a. Major 2nd
- b. Major 3rd
- c. Perfect octave

Question J

Choose the interval you hear being played.

- a. Perfect 4th
- b. Perfect 5th
- c. Major 2nd

This concludes the
Level 4
Ear training Test

Good luck on the rest of the test!