

LVMTA MUSICIANSHIP EXAMS

THEORY EXAM GUIDELINES

LEVEL 6

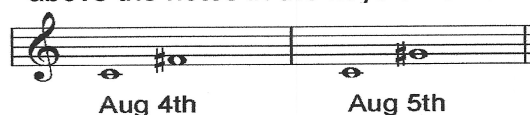
NOTATION None

INTERVALS

Identify in treble or bass clefs:

- Major 2nd 3rd 6th 7th
- Perfect 4th 5th 8th
- Minor 2nd 3rd 6th 7th
- Augmented 4th 5th
- Diminished 4th 5th 7th

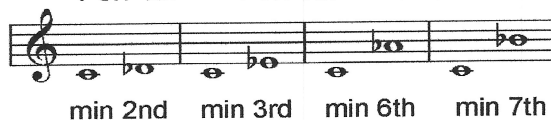
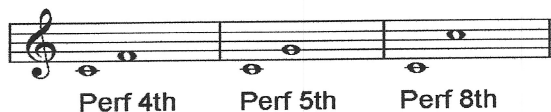
above the notes in the keys of C F G A E B \flat E \flat A \flat



Draw in treble or bass clefs:

- Major 2nd 3rd 6th 7th
- Perfect 4th 5th 8th
- Minor 2nd 3rd 6th 7th

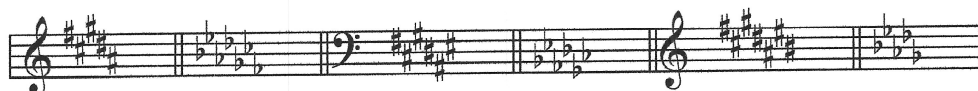
above the notes in the keys of C F G D A E B \flat E \flat A \flat



KEY SIGNATURES

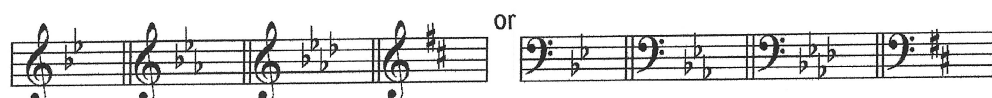
Identify in treble or bass clefs:

- Keys of B/C \flat F \sharp /G \flat C \sharp /D \flat Major



Draw in treble or bass clefs:

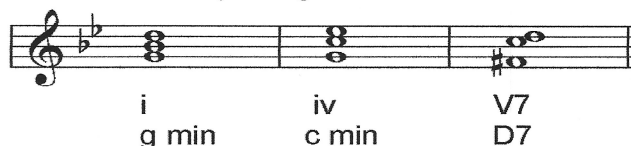
- Keys of g c f b minor



SCALES AND CHORDS

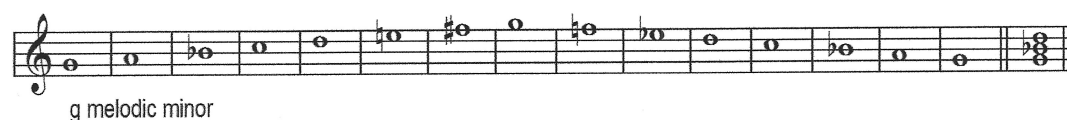
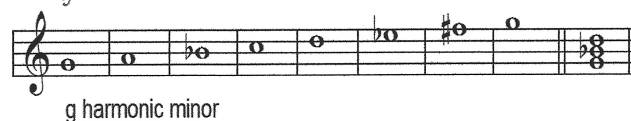
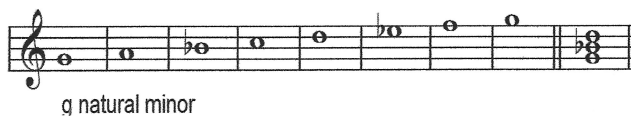
Identify in treble or bass clefs:

- B/Cb F#/Gb C#/Db Major scales
- i iv V7 in keys of g c f b minor



Draw in treble or bass clefs:

- g c f b minor - 8 note scales, 3 forms, and tonic (i) triads in root position



RHYTHM

Identify:

- Any time signature
- Any note or rest value

Draw:

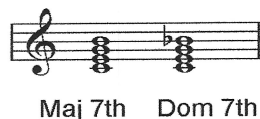
- Complete measures with correct notes and rests

EAR TRAINING

Identify:

- Major, natural - harmonic - melodic minor and chromatic scales
- Major, minor, diminished, and augmented triads

- Major and Dominant 7ths



- Intervals - M2, m2, M3, m3, P4, P5, P8
- Rhythmic and melodic dictation
- Notation correction



VOCABULARY**Match definitions:**

Assai	Very
Intonation	True or false matching of pitch
Morendo	Dying away
Opus	Work
Pesante	Heavily
Sempre	Always
Subito	Suddenly
Tenuto	Held
Etouffee	Also called "muffle", to dampen harp strings with the flat of the palm
Laissez vibrer (L.V.)	To fade away without dampening (harp)
Tonic	1 st degree of scale
Supertonic	2 nd degree of scale
Mediant	3 rd degree of scale
Subdominant	4 th degree of scale
Dominant	5 th degree of scale
Submediant	6 th degree of scale
Subtonic	7 th degree of scale

HISTORY

Composer	Nationality	Period
Domenico Scarlatti	Italian	Baroque
Franz Joseph Haydn	Austrian	Classical
Franz Schubert	Austrian	Romantic
Felix Mendelssohn	German	Romantic
Edward MacDowell	American	Transitional - Romantic to Contemporary

FORM**Define:**

<u>Sonata</u>	Multi-movement composition, with the 1 st movement in Allegro Form which consists of the following:
Exposition	Consists of 2 themes, 1 st in the tonic key and 2 nd in a closely related key.
Development	Uses material from both themes and in many keys.
Recapitulation	Repeats the exposition with themes in the tonic key.
Andante or Adagio	Slow; usually the second movement of a sonata.
Scherzo, Minuet, or Rondo	Additional movements of a sonata.